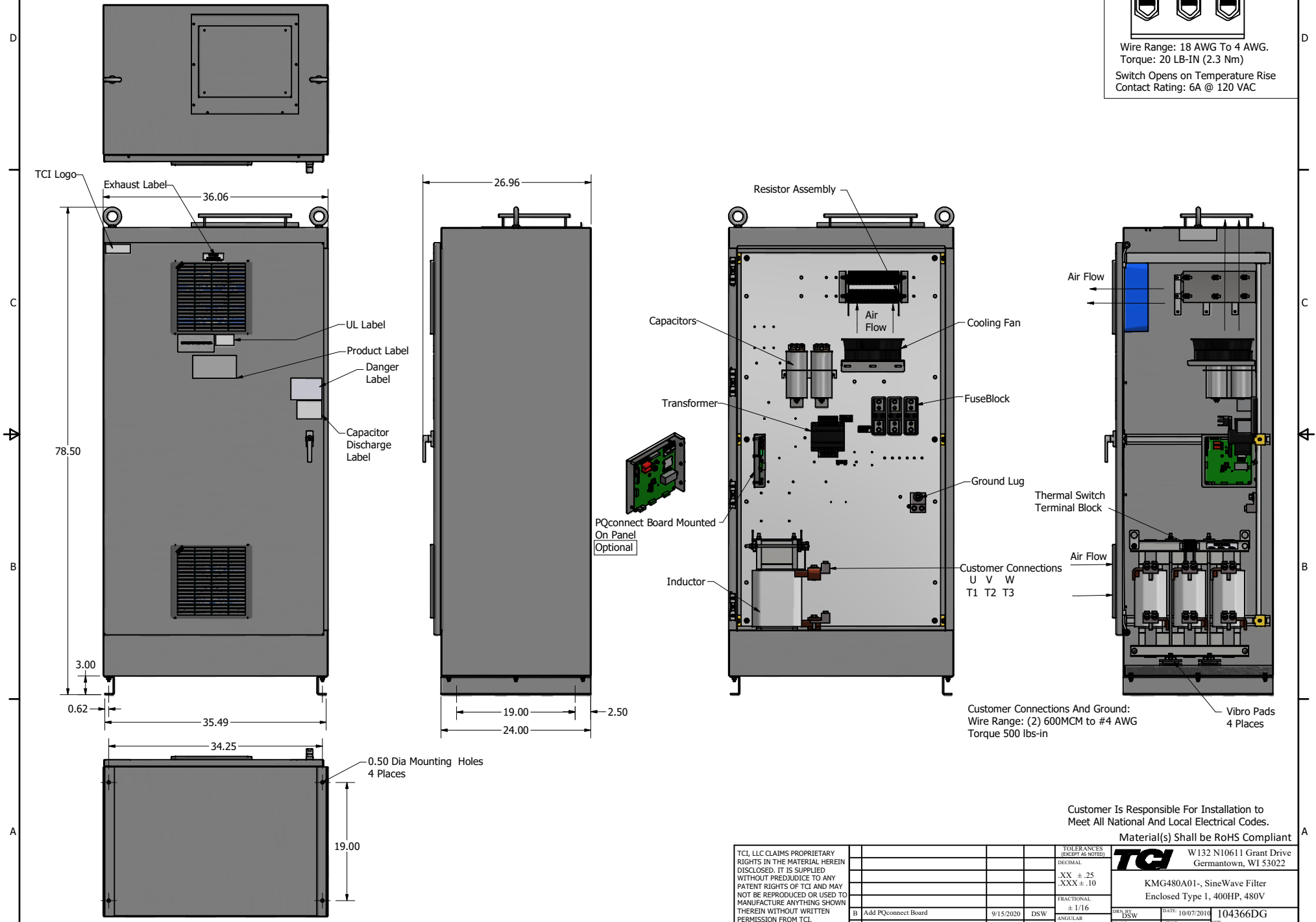
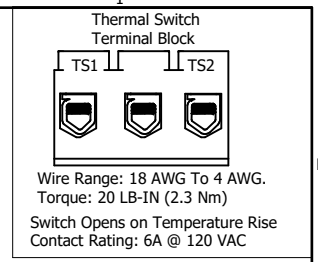


SineWave Part Number	Schematic Drawing#	Approx Weight (LBS)
KMG480A01A	24281-3A	970
KMG480A01P	24281-3P	975

HorsePower (HP)	kVar	Max Amps	Voltage (V)	HZ	Phase
400	40	480	480	60	3



Customer Is Responsible For Installation to Meet All National And Local Electrical Codes.

Material(s) Shall be RoHS Compliant

TCI, LLC CLAIMS PROPRIETARY RIGHTS IN THE MATERIAL HEREIN DISCLOSED. IT IS SUPPLIED WITHOUT PREJUDICE TO ANY PATENT RIGHTS OF TCI AND MAY NOT BE REPRODUCED OR USED TO MANUFACTURE ANYTHING SHOWN THEREIN WITHOUT WRITTEN PERMISSION FROM TCI.					TOLERANCES (EXCEPT AS NOTED)	<b>TCI</b> W132 N10611 Grant Drive Germantown, WI 53022  KMG480A01- SineWave Filter Enclosed Type 1, 400HP, 480V  DWN BY: DSW DATE: 10/07/2014 104366DG SCALE: 1/5.5 DRAWN: CSE SHEET 1 OF 1
					DECIMAL	
					.XX ±.25 .XXX ±.10	
					FRACTIONAL	
	B	Add PQconnect Board	9/15/2020	DSW	± 1/16	
	NO	REVISION	DATE	BY	± 1"	